

Home data report

703 Saint James Street, Shadyside, Pittsburgh, Allegheny County, Pennsylvania, United States, 15232



Total Area: 2770 sq. ft

Basement: 67 sq. ft, 1st Floor: 2094 sq. ft, 2nd Floor: 609 sq. ft

Excluded: Walls: 0 sq. ft

Property summary

3 Floors

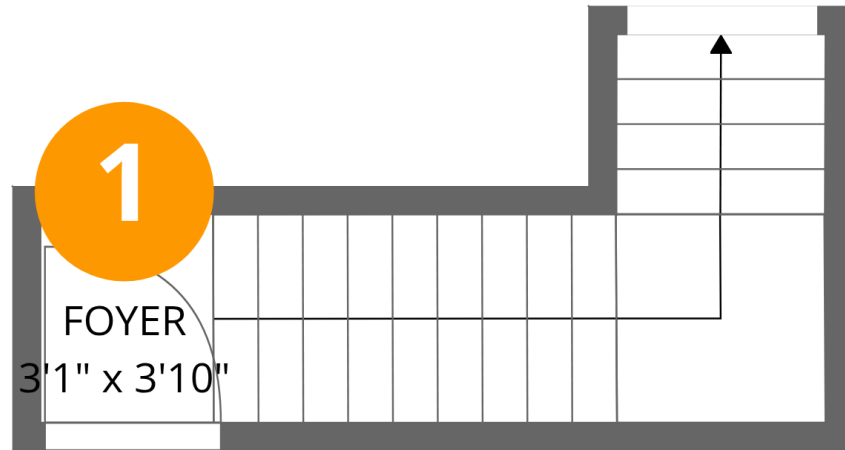
4 Bedrooms

3 Bathrooms

1 Half baths

Home data report

703 Saint James Street, Shadyside, Pittsburgh, Allegheny County, Pennsylvania, United States, 15232



Room dimensions

Floor 1 Below grade

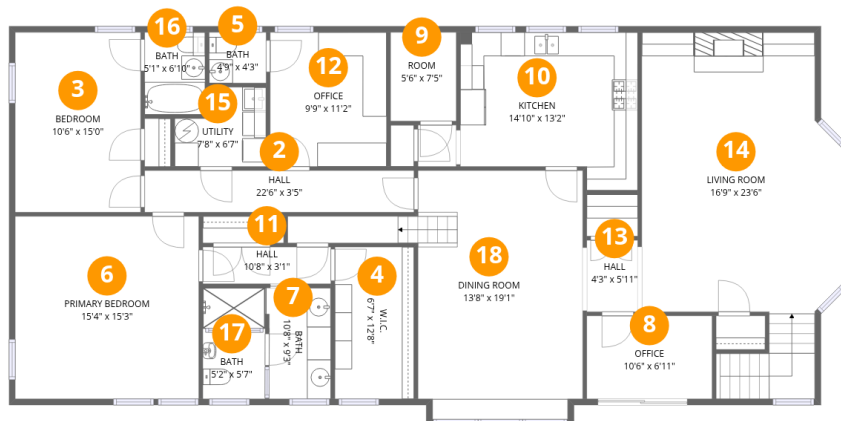
Total:67sqft

Excluded: 0sqft

#		Dimensions	sqft	Counted as living area
1	Foyer	3'1" x 3'10"	12 sq. ft	Yes

Home data report

703 Saint James Street, Shadyside, Pittsburgh, Allegheny County, Pennsylvania, United States, 15232



Room dimensions

Floor 2

Total:2094sqft Excluded: 0sqft

#		Dimensions	sqft	Counted as living area
2	Hall	22'6" x 3'5"	78 sq. ft	Yes
3	Bedroom	10'6" x 15'0"	157 sq. ft	Yes
4	W.I.C.	6'7" x 12'8"	84 sq. ft	Yes
5	Bath	4'9" x 4'3"	20 sq. ft	Yes
6	Primary Bedroom	15'4" x 15'3"	234 sq. ft	Yes
7	Bath	10'8" x 9'3"	99 sq. ft	Yes
8	Office	10'6" x 6'11"	73 sq. ft	Yes
9	Room	5'6" x 7'5"	41 sq. ft	Yes
10	Kitchen	14'10" x 13'2"	196 sq. ft	Yes
11	Hall	10'8" x 3'1"	33 sq. ft	Yes
12	Office	9'9" x 11'2"	109 sq. ft	Yes

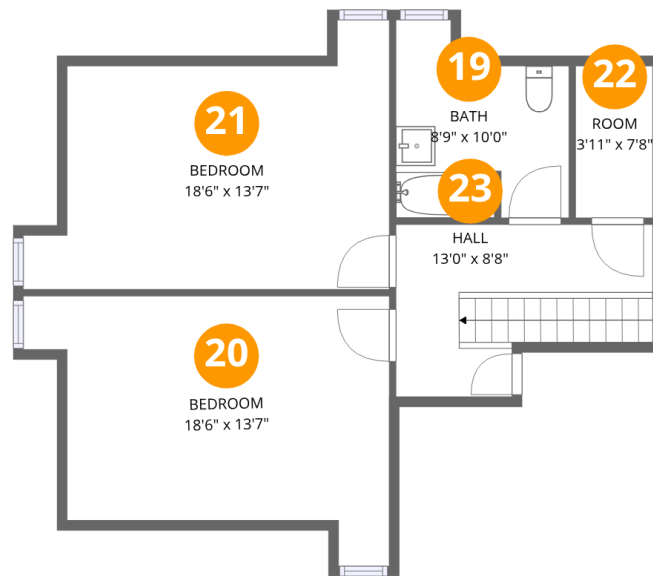
Home data report

703 Saint James Street, Shadyside, Pittsburgh, Allegheny County, Pennsylvania, United States, 15232

#		Dimensions	sqft	Counted as living area
13	Hall	4'3" x 5'11"	25 sq. ft	Yes
14	Living Room	16'9" x 23'6"	394 sq. ft	Yes
15	Utility	7'8" x 6'7"	50 sq. ft	Yes
16	Bath	5'1" x 6'10"	35 sq. ft	Yes
17	Bath	5'2" x 5'7"	29 sq. ft	Yes
18	Dining Room	13'8" x 19'1"	260 sq. ft	Yes

Home data report

703 Saint James Street, Shadyside, Pittsburgh, Allegheny County, Pennsylvania, United States, 15232



Room dimensions

Floor 3

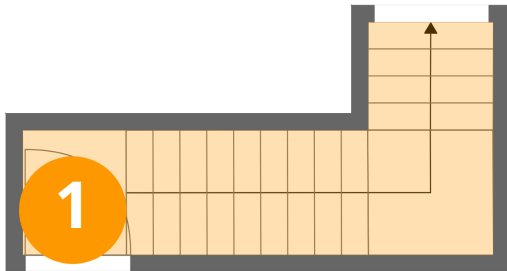
Total:609sqft

Excluded: 0sqft

#		Dimensions	sqft	Counted as living area
19	Bath	8'9" x 10'0"	87 sq. ft	Yes
20	Bedroom	18'6" x 13'7"	252 sq. ft	Yes
21	Bedroom	18'6" x 13'7"	252 sq. ft	Yes
22	Room	3'11" x 7'8"	30 sq. ft	Yes
23	Hall	13'0" x 8'8"	113 sq. ft	Yes

703 Saint James Street, Shadyside, Pittsburgh, Allegheny County, Pennsylvania, United States, 15232

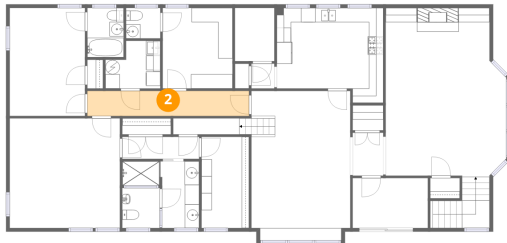
1 Floor 1 - Foyer



Dimensions: 3'1" x 3'10"
Area: 12 sq. ft
Counted as living area: Yes

Heated: Yes
Finished: Yes
Enclosed: Yes
Contiguous: Yes
Permitted: Yes
Wet space: No
Addition: No
Conversion: No

2 Floor 2 - Hall



Dimensions: 22'6" x 3'5"
Area: 78 sq. ft
Counted as living area: Yes

Heated: Yes
Finished: Yes
Enclosed: Yes
Contiguous: Yes
Permitted: Yes
Wet space: No
Addition: No
Conversion: No

703 Saint James Street, Shadyside, Pittsburgh, Allegheny County, Pennsylvania, United States, 15232

3 Floor 2 - Bedroom



Dimensions: 10'6" x 15'0"
Area: 157 sq. ft
Counted as living area: Yes

Heated: Yes
Finished: Yes
Enclosed: Yes
Contiguous: Yes
Permitted: Yes
Wet space: No
Addition: No
Conversion: No

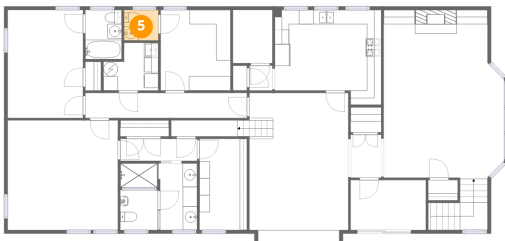
4 Floor 2 - W.I.C.



Dimensions: 6'7" x 12'8"
Area: 84 sq. ft
Counted as living area: Yes

Heated: Yes
Finished: Yes
Enclosed: Yes
Contiguous: Yes
Permitted: Yes
Wet space: No
Addition: No
Conversion: No

5 Floor 2 - Bath



Dimensions: 4'9" x 4'3"
Area: 20 sq. ft
Counted as living area: Yes

Heated: Yes
Finished: Yes
Enclosed: Yes
Contiguous: Yes
Permitted: Yes
Wet space: Yes
Addition: No
Conversion: No

703 Saint James Street, Shadyside, Pittsburgh, Allegheny County, Pennsylvania, United States, 15232

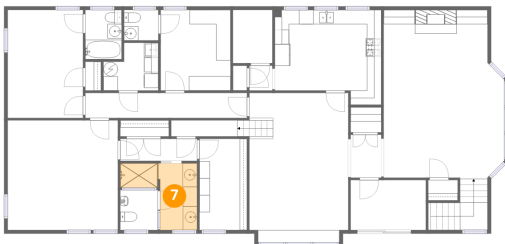
6 Floor 2 - Primary Bedroom



Dimensions: 15'4" x 15'3"
Area: 234 sq. ft
Counted as living area: Yes

Heated: Yes
Finished: Yes
Enclosed: Yes
Contiguous: Yes
Permitted: Yes
Wet space: No
Addition: No
Conversion: No

7 Floor 2 - Bath



Dimensions: 10'8" x 9'3"
Area: 99 sq. ft
Counted as living area: Yes

Heated: Yes
Finished: Yes
Enclosed: Yes
Contiguous: Yes
Permitted: Yes
Wet space: Yes
Addition: No
Conversion: No

8 Floor 2 - Office

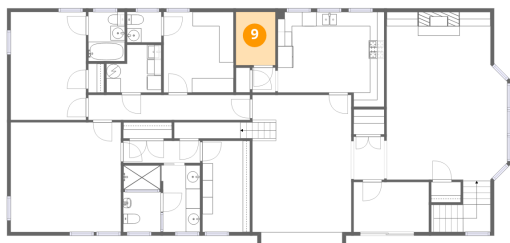


Dimensions: 10'6" x 6'11"
Area: 73 sq. ft
Counted as living area: Yes

Heated: Yes
Finished: Yes
Enclosed: Yes
Contiguous: Yes
Permitted: Yes
Wet space: No
Addition: No
Conversion: No

703 Saint James Street, Shadyside, Pittsburgh, Allegheny County, Pennsylvania, United States, 15232

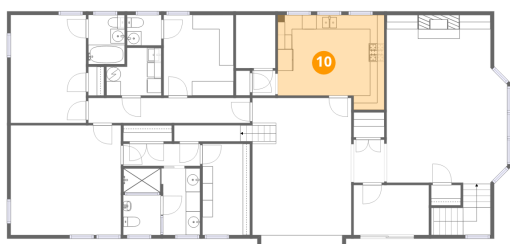
9 Floor 2 - Room



Dimensions: 5'6" x 7'5"
Area: 41 sq. ft
Counted as living area: Yes

Heated: Yes
Finished: Yes
Enclosed: Yes
Contiguous: Yes
Permitted: Yes
Wet space: No
Addition: No
Conversion: No

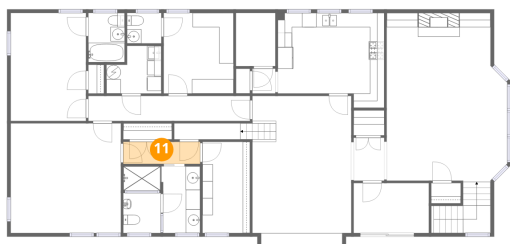
10 Floor 2 - Kitchen



Dimensions: 14'10" x 13'2"
Area: 196 sq. ft
Counted as living area: Yes

Heated: Yes
Finished: Yes
Enclosed: Yes
Contiguous: Yes
Permitted: Yes
Wet space: No
Addition: No
Conversion: No

11 Floor 2 - Hall



Dimensions: 10'8" x 3'1"
Area: 33 sq. ft
Counted as living area: Yes

Heated: Yes
Finished: Yes
Enclosed: Yes
Contiguous: Yes
Permitted: Yes
Wet space: No
Addition: No
Conversion: No

703 Saint James Street, Shadyside, Pittsburgh, Allegheny County, Pennsylvania, United States, 15232

12 Floor 2 - Office



Dimensions: 9'9" x 11'2"
Area: 109 sq. ft
Counted as living area: Yes

Heated: Yes
Finished: Yes
Enclosed: Yes
Contiguous: Yes
Permitted: Yes
Wet space: No
Addition: No
Conversion: No

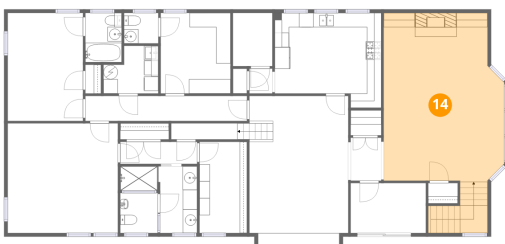
13 Floor 2 - Hall



Dimensions: 4'3" x 5'11"
Area: 25 sq. ft
Counted as living area: Yes

Heated: Yes
Finished: Yes
Enclosed: Yes
Contiguous: Yes
Permitted: Yes
Wet space: No
Addition: No
Conversion: No

14 Floor 2 - Living Room

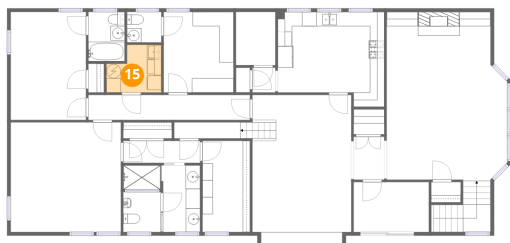


Dimensions: 16'9" x 23'6"
Area: 394 sq. ft
Counted as living area: Yes

Heated: Yes
Finished: Yes
Enclosed: Yes
Contiguous: Yes
Permitted: Yes
Wet space: No
Addition: No
Conversion: No

703 Saint James Street, Shadyside, Pittsburgh, Allegheny County, Pennsylvania, United States, 15232

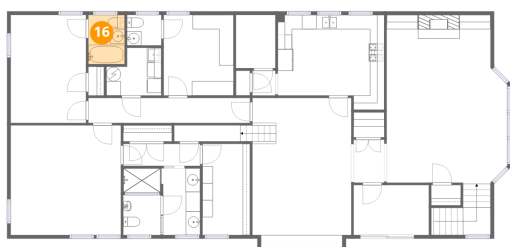
15 Floor 2 - Utility



Dimensions: 7'8" x 6'7"
Area: 50 sq. ft
Counted as living area: Yes

Heated: Yes
Finished: Yes
Enclosed: Yes
Contiguous: Yes
Permitted: Yes
Wet space: No
Addition: No
Conversion: No

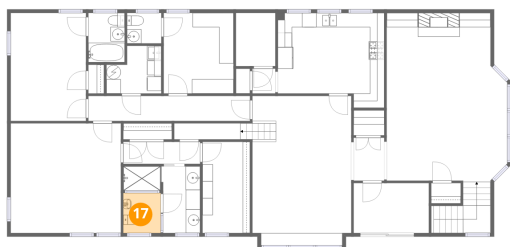
16 Floor 2 - Bath



Dimensions: 5'1" x 6'10"
Area: 35 sq. ft
Counted as living area: Yes

Heated: Yes
Finished: Yes
Enclosed: Yes
Contiguous: Yes
Permitted: Yes
Wet space: Yes
Addition: No
Conversion: No

17 Floor 2 - Bath

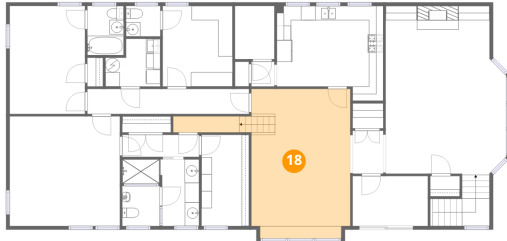


Dimensions: 5'2" x 5'7"
Area: 29 sq. ft
Counted as living area: Yes

Heated: Yes
Finished: Yes
Enclosed: Yes
Contiguous: Yes
Permitted: Yes
Wet space: No
Addition: No
Conversion: No

703 Saint James Street, Shadyside, Pittsburgh, Allegheny County, Pennsylvania, United States, 15232

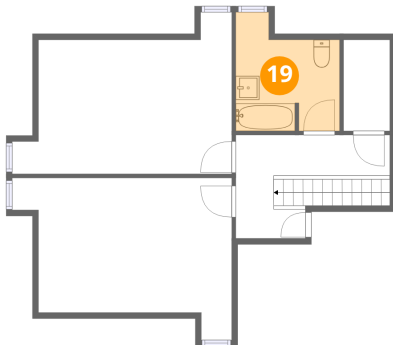
18 Floor 2 - Dining Room



Dimensions: 13'8" x 19'1"
Area: 260 sq. ft
Counted as living area: Yes

Heated: Yes
Finished: Yes
Enclosed: Yes
Contiguous: Yes
Permitted: Yes
Wet space: No
Addition: No
Conversion: No

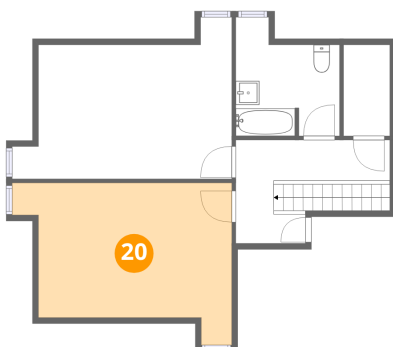
19 Floor 3 - Bath



Dimensions: 8'9" x 10'0"
Area: 87 sq. ft
Counted as living area: Yes

Heated: Yes
Finished: Yes
Enclosed: Yes
Contiguous: Yes
Permitted: Yes
Wet space: Yes
Addition: No
Conversion: No

20 Floor 3 - Bedroom

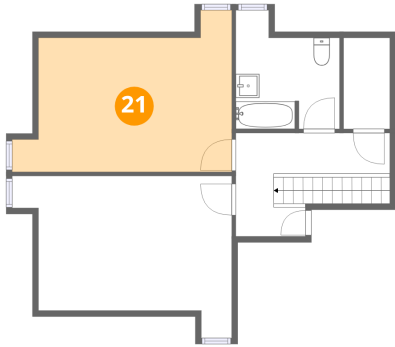


Dimensions: 18'6" x 13'7"
Area: 252 sq. ft
Counted as living area: Yes

Heated: Yes
Finished: Yes
Enclosed: Yes
Contiguous: Yes
Permitted: Yes
Wet space: No
Addition: No
Conversion: No

703 Saint James Street, Shadyside, Pittsburgh, Allegheny County, Pennsylvania, United States, 15232

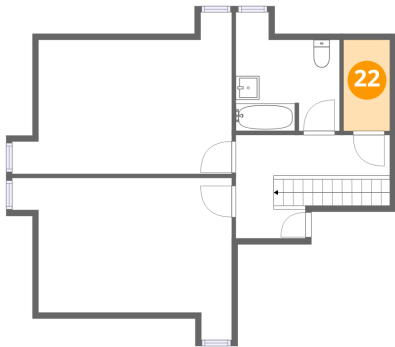
21 Floor 3 - Bedroom



Dimensions: 18'6" x 13'7"
Area: 252 sq. ft
Counted as living area: Yes

Heated: Yes
Finished: Yes
Enclosed: Yes
Contiguous: Yes
Permitted: Yes
Wet space: No
Addition: No
Conversion: No

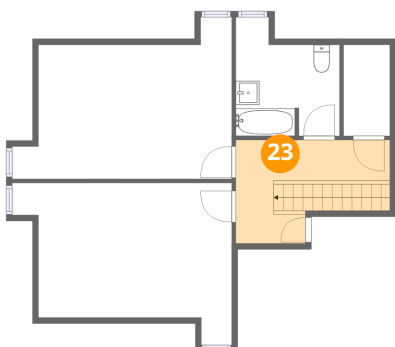
22 Floor 3 - Room



Dimensions: 3'11" x 7'8"
Area: 30 sq. ft
Counted as living area: Yes

Heated: Yes
Finished: Yes
Enclosed: Yes
Contiguous: Yes
Permitted: Yes
Wet space: No
Addition: No
Conversion: No

23 Floor 3 - Hall



Dimensions: 13'0" x 8'8"
Area: 113 sq. ft
Counted as living area: Yes

Heated: Yes
Finished: Yes
Enclosed: Yes
Contiguous: Yes
Permitted: Yes
Wet space: No
Addition: No
Conversion: No